

Image features

- Six image enabled blue laser detectors
- Every image feature generated from each detector

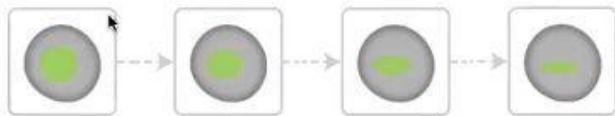


- Size (LL, FSC, SSC, CH1, CH2, CH3)
- Eccentricity (LL, FSC, SSC, CH1, CH2, CH3)
- Radial moment (LL, FSC, SSC, CH1, CH2, CH3)
- Max intensity (LL, FSC, SSC, CH1, CH2, CH3)
- Correlation (CH1, CH2, CH3)
- Delta center of mass (LL, FSC, SSC, CH1, CH2, CH3)
- Diffusivity (LL, FSC, SSC, CH1, CH2, CH3)

Feature & Application

Example images and histogram

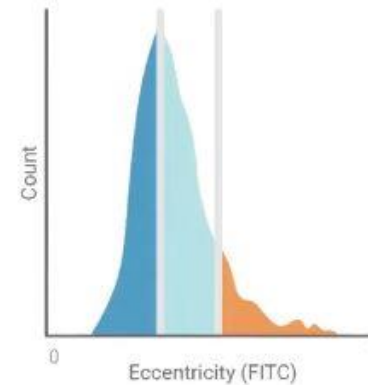
Eccentricity (Scatter and fluorescence)



- Cellular morphology
- Cluster identification
- Doublet discrimination



■ Low Eccentricity



■ Intermediate Eccentricity

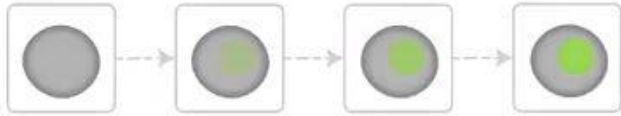


■ High Eccentricity

Image features

Feature & Application

Max Intensity (Scatter and fluorescence)

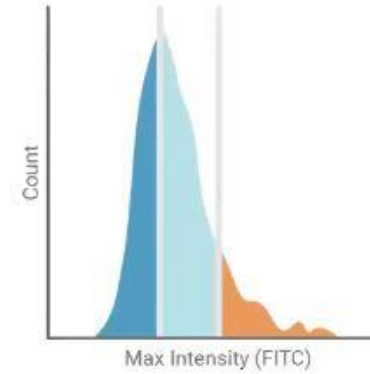


- Punctate fluorescence
- Phagocytosis assay
- Cell cycle

Example images and histogram



■ Dim Fluorescent Cells

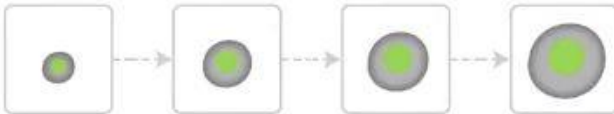


■ Intermediate Fluorescent Cells



■ Bright Fluorescent Cells

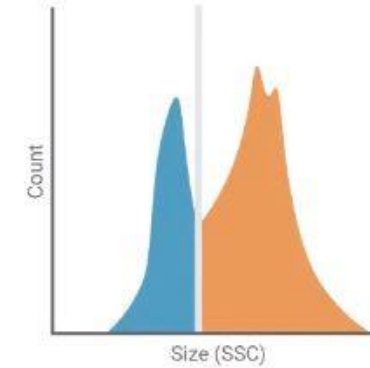
Size (Scatter and fluorescence)



- Cellular morphology
- Label-free sorting
- Cell cycle



■ Small Cells



■ Large Cells

Image features

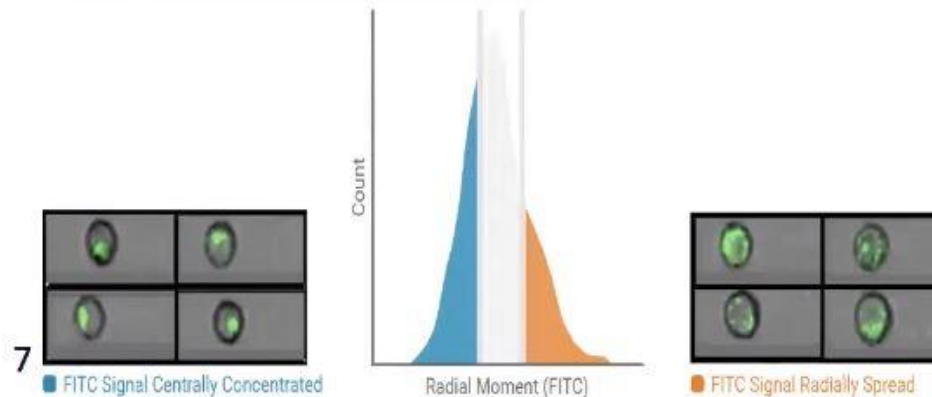
Feature & Application

Example images and histogram

Radial Moment (Scatter and fluorescence)



- Cellular morphology
- Cluster identification
- Doublet discrimination



Correlation

(Fluorescence: Any two channels)



- Nuclear translocation

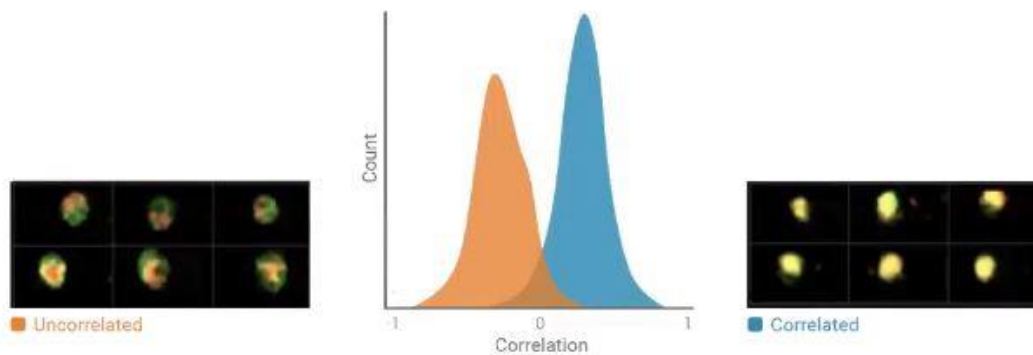


Image features

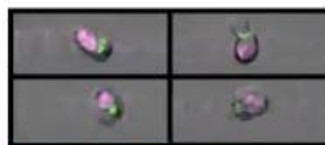
Feature & Application

Example images and histogram

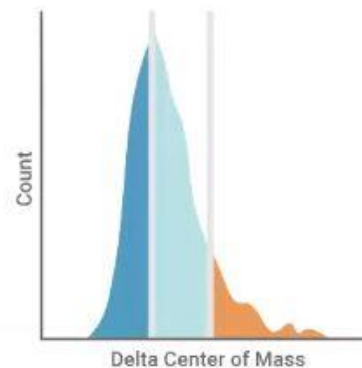
Delta Center of Mass (Fluorescence: Any two channels)



- Intracellular trafficking
- Cell-cell interaction



■ Low Delta Center of Mass



■ Int Delta Center of Mass



■ High Delta Center of Mass

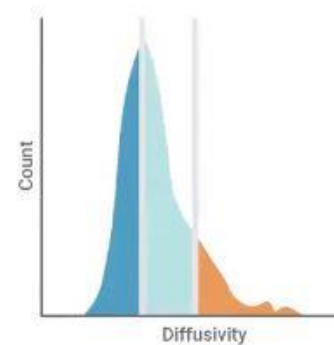
Diffusivity (Scatter and fluorescence)



- Cell morphology
- Phagocytosis



■ Low Diffusivity



■ Intermediate Diffusivity



■ High Diffusivity